



We Live Mining

The Earth is Full of Treasures – We Help You Bring Them to Surface

The mining industry has been key to the development of modern civilisation, underpinning the Iron and Bronze Age, the Industrial Revolution and the infrastructure of today's information age. Mining takes place on every continent and everywhere new deposits are being discovered. New mines will be opened whilst existing mines are being explored and modernised.



The Mining Technology Innovator

Safety, productivity and efficiency in underground operations are the factors that determine competitiveness on the international resource markets. Our technology strengthens this competitive edge, because only those that use the best available technology can achieve the best results in production and safety.

Our experienced engineers and technicians know what it takes underground. Many of them have worked underground for a period of time and seen many different types of operations. Our team is dedicated to tackle your challenges and provide the right solutions.

2014 marks the 50th Anniversary of the Becker Mining Systems Group



Launch CA-190 Battery Monorail and general battery technology for underground use



Increased activities in Chile and financial consolidation of the Chilean entity



2008 - 2013

Further acquisitions and foundations in Australia, South Africa, USA and Mexico



2014

Launch ENDIS 4.0 and PROMOS 4.0

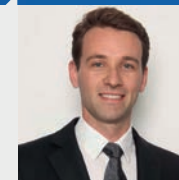
2020



2021

Jonas Maximilian Becker is appointed CEO of Becker Mining Europe GmbH.

2022



2022

Foundation of Becker Mining Sweden AB

2025



Our Product Philosophy

Engineered for Harsh Environments – Designed for the Future

At Becker Mining Systems, our solutions are more than just products – they are the result of over 60 years of hands-on experience, continuous innovation, and close collaboration with customers and mining operations across the globe. From the depths of South African platinum mines to the coalfields of Australia and the potash operations of Northern Europe – our systems are shaped by the unique challenges of each region and refined through decades of global insight.

Our product families are built on a shared design philosophy that combines uncompromising durability, intuitive usability and digital integration. Modular architectures, plug-and-play functionality, and scalable software allow Becker systems to adapt to any operation – not the other way around. Whether through patented safety features, intrinsically safe automation or compact electrical solutions, our technology is built to reduce downtime, simplify maintenance, and deliver lasting value.

From individual components to fully integrated platforms – Becker Mining Systems is your partner for future-ready mining infrastructure.

BCoM – Becker Connected Mine

Make Your Operation a Smart One

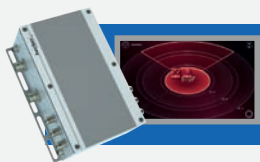
The Becker Connected Mine converts the idea of an Industry4.0 production, where all equipment is interlinked with each other and exchanges data via the OPC UA standard protocol. All our products come OPC UA ready, which allows a Plug-and-play

approach for installation. Smartflow as the central interaction point for your database also integrates information from 3rd party products.





UHF and VHF
Leaky Feeder Networks



PDS4.0



BRS4.0

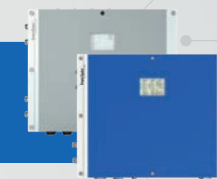


smartflow

LTE
WIFI
LEAKY FEEDER

LEAKY FEEDER
WIFI
LTE

WRAP310
and WRAP260



PROMOS4.0



ENDIS4.0



Partnerships

KOMATSU

Becker has entered into a strategic partnership with Komatsu to support the production of Powered Roof Supports (PRS) for underground mining. Since May 2022, Becker manufactures PRS systems based on Komatsu's proven designs, complemented by Becker's engineering expertise, rebuild capabilities, and global spare parts support.

This cooperation brings together decades of experience and manufacturing know-how, ensuring high-performance support systems tailored to the demanding conditions of underground environments. Customers benefit from a reliable supply chain and enhanced flexibility throughout the equipment lifecycle.

ERICSSON

Seamless roaming and minimal latency requirements have been the drivers for LTE 4G and 5G networks in mining operations on surface and underground. Being able to real time remote control machinery requires latencies in the magnitude of less than 200 milliseconds.

Becker has partnered with Ericsson AB from Sweden to commission Ericsson Private (EP4G/EP5G) networks in the mining industry and thus offers customers a third available network technology that is cutting edge. These networks are currently available for non-hazardous areas only.

verope MINING

Becker Mining Systems and verope combine their expertise to offer a fully integrated shaft hoisting solution. As a specialist in high-performance mining ropes, verope provides wire ropes engineered for maximum load-bearing capacity, minimal elongation, and extended service life under extreme conditions. In close technical collaboration, both partners align rope construction with attachment design – from material compatibility and load transfer to dynamic behavior under tension. This ensures that every component performs as one cohesive unit, streamlining implementation while significantly increasing safety, durability and efficiency throughout the hoisting system's lifecycle.



Customized Services



Custom System Designs

Every mine is different, so should a system layout be: From energy supply to communication systems and transport solutions. We analyse all the available information and find the best possible solution.



Comprehensive Maintenance & Repair

Not only do we offer year on year support contracts, to keep your operation running - At Becker Mining you can always count on our workshop to overhaul and repair products. No matter how old your products.



Onsite technical assistance

If need may be, our technicians can always assist your team onsite or remotely in getting things right.



Emergency Support

We offer emergency onsite support for our customers. Depending on geographic and travel distance, onsite service can be as quick as 6 hours.



Technical Trainings & Workshops

With your Becker products you can count on technical trainings for all your staff. Depending on your needs we suggest regular workshop onsite and remote to keep technicians up to speed with your Becker products.



MineView AI

Seeing What Matters – In Real Time

With MineView AI, Becker Mining Systems takes safety and monitoring technology in mining to the next level. Our AI-powered camera systems detect relevant events in real time and provide valuable insights to optimise your operations – without the need for manual evaluation.

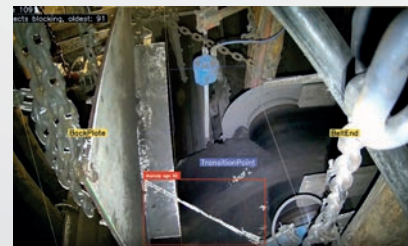
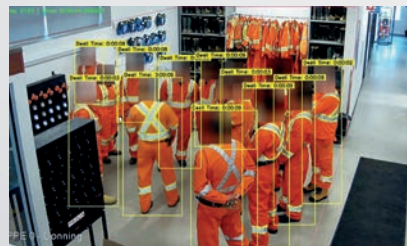
Data-driven, adaptive, and precise:

MineView AI processes visual data streams directly at the source – exactly where they occur. The systems automatically detect people, equipment, and safety-relevant situations, issuing alerts as soon as deviations are identified. This enables early risk recognition and helps prevent accidents before they happen – all in line with current GDPR.

Practical applications that deliver:

Whether it's automatic detection of personal protective equipment (PPE Detection), targeted monitoring of drilling activity (Drill Monitoring), or inspection of conveyor belts (Conveyor Belt Monitoring) – MineView AI makes processes visible, transparent, and safe.

Seamlessly integrated into Becker's existing communication and automation infrastructure, MineView AI transforms images into insights – and insights into smarter mining decisions.



smartflow

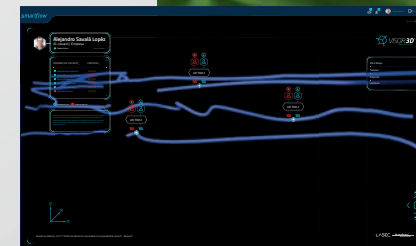
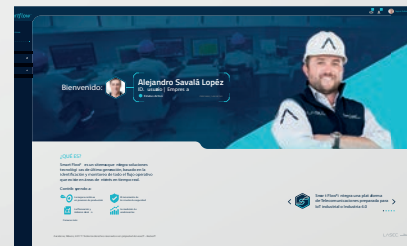
Your Digital Twin Solution for Complete Process Control

smartflow from Becker Mining Systems is the digital control platform for underground and surface operations. It centralizes all relevant operational process data in one intuitive interface, allowing operators to monitor, manage and optimize key mining systems in real time. Fully integrated into Becker's automation and communication infrastructure, smartflow enables a holistic overview of all connected systems. Real-time alerts, trend analysis and predictive diagnostics transform raw data into actionable insights – for smarter decisions, increased safety and greater productivity across the entire mine.

Available modules include:

- Ventilation control
- Energy management
- Water control
- Production scheduling
- Preventive maintenance
- Asset tracking
- Personnel and access management

Each module is fully customizable and can be combined as needed – for a solution as dynamic as your mine.





smartsense

Real-time Environmental Monitoring

With smartsense, Becker Mining Systems offers a robust and intelligent solution for the real-time monitoring of environmental conditions in mining operations. The system continuously captures and evaluates key parameters such as gas concentrations, temperature fluctuations, humidity, airflow and vibration – all with the precision and resilience required in both underground and surface environments. This enables operators to identify potential hazards early, comply with regulatory standards, and optimize ventilation and safety strategies.

As an all-in-one package, smartsense eliminates the need for complex cabling or time-consuming programming. Thanks

to its modular design and plug-and-click deployment, the system allows for fast, hassle-free installation and significantly reduces both implementation and calibration times. All data is visualized in a centralized dashboard that combines live views, automated alerts and historical analysis, giving supervisors and control room personnel immediate clarity and control across the entire mine.

smartsense integrates with smartflow and is further enhanced by Becker Mining Systems' AI-based solutions. Together, they form a powerful foundation for predictive, transparent and efficient mine management – 24/7, and fully connected.

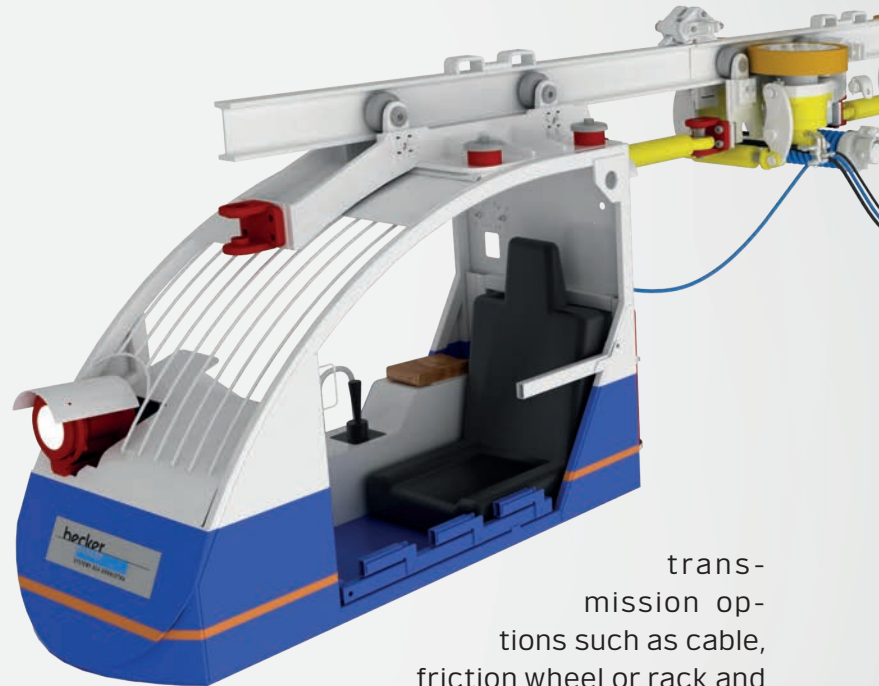
MineTrans

We Get You Moving

Underground performance depends on efficient transport systems. Even under the most difficult conditions, the fast and safe transport of personnel and materials is of paramount importance.

MineTrans, the sophisticated transportation solution from Becker Mining Systems, combines high performance and reliability with cost-effective maintenance and operation. Specializing in transporting heavy loads on steep inclines unsuitable for standard vehicles, Becker's rail-mounted systems feature rails that provide positive guidance for vehicles, preventing derailments.

Becker offers versatile options that include both floor-mounted duorail and roof-suspended mono-rail solutions. These solutions can be powered by a variety of methods, including electro-hydraulic, diesel-hydraulic or electric systems, with power



transmission options such as cable, friction wheel or rack and pinion. In addition, many trains can be equipped with radio control systems or autonomous driving functions that allow independent navigation in complicated environments.

Combined with user-friendly switches and a wide range of optional equipment, MineTrans allows maximum design flexibility.





UHF and VHF Leaky Feeder Networks

We Speak Your Language

At Becker, we take pride in engineering the best in tried-and-tested communication technologies that allow people and resources to work together as one unit, increasing the effectiveness, efficiency and safety of any mining operation. Our world-class modular and expandable data communication network allows for flexible, reliable communication to suit mining's ever expanding

and changing operational needs. Our equipment is adapted and designed for the harshest environments and conditions. Becker's communication solution SMARTCOM enables the transmission of radio and data throughout the entire mine. The range embodies three available technologies with UHF/VHF, Wifi and LTE at the core.

Reliable Communication Saves Lives and Money

UHF and VHF networks present a highly reliable and cost effective solution for digital voice transmission in any operation. Signals are being distributed via robust Leaky Feeder cables and amplifiers that filter and amplify the data. The transfer of limited amounts of data is also possible. Becker also provides intrinsically safe variants for explosive atmospheres.



WRAP310 and WRAP260

Your Wifi Access Points for Any Kind of Environment

Wifi is the ideal transmission medium for digital voice, wide-spread data and video signals, allowing mine-wide coverage and near real-time feedback from all intelligent devices and personnel within the mine. For areas of mines requiring high data throughput, our Wifi and MESH solutions offer a high-speed addition to the mine's communica-

tion network. With the latest RFID technology, Becker integrates advanced real time location systems (RTLS) solutions into the WRAP series. The WRAP310 and 260 product ranges are IP67 certified and IEC 60068 tested for environmental impacts.



PDS4.0

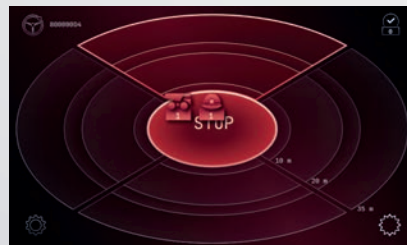
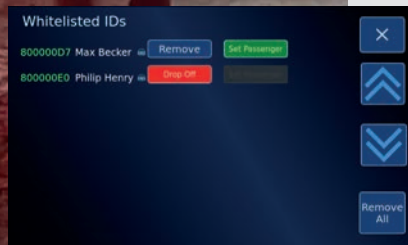
The Smart Proximity Detection System – Prohibiting Accidents With Mobile Equipment

Becker has been a key player in advanced RTLS for underground operations since the late 1990's. Our RFID technology has been deployed at customers all over the world and continues to fulfill the requirements of EMESRT Level7 systems. The new PDS4.0 has been developed to fulfill the even stricter regulations for Level9 systems set forth by EMESRT.

The PDS4.0 is a retrofittable onboard collision avoidance system. It monitors the distance between machines and personnel and possibly any other assets equipped with a compatible tag. It alerts operators and walking personnel of the

presence of possible danger via audio and visual alarms. The system is connected to a machine's controls and can initiate a slowdown and stop of it should need be – minimising the risk of fatalities in low visibility environments.

In addition, the productivity of a mine can be easily increased due to the monitored use of vehicles and equipment. All our systems are also certified for use in gassy mines, because at Becker, we always put safety first.



PROMOS4.0

The World's Most Advanced Intrinsically Safe Automation System

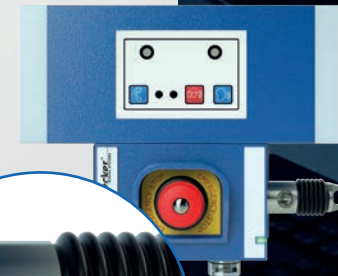
The requirements for complete minewide automation systems are highly complex. They must address both the harsh environmental conditions underground and the need for reliable monitoring, control, and visualisation across extensive network structures. With MINCOS, Becker Mining Systems delivers a versatile, flexible automation platform that covers all levels of the mining process.

Trouble-Free Operations Leads to Success

PROMOS4.0 is a state-of-the-art system based on powerful industrial PCs like the Mining Master and adaptable Fieldbus components. Fast and reliable data transmission is ensured via copper or fibre optics, while the modular system design allows for maximum scalability and flexibility. Its open architecture guarantees full software compatibility up to the central mine control room. Built-in features include multitasking, real-time capabilities, and programming according to international PLC standards (IEC 61131). Plug-and-play technology simplifies the integration of peripheral

components such as intercom systems and emergency stop switches, reducing installation and maintenance time.

A key innovation within the PROMOS4.0 system is Becker's globally patented rope-based emergency stop switch. Unlike conventional solutions, it is compact, reliable, and designed for maximum operational safety. The patent protects a simplified switch mechanism that ensures rapid shutdown of machines in critical situations.



BRS4.0

Belt Rip Scanning – Protecting Your Critical Production Infrastructure

The Becker BRS series of belt rip monitoring systems has a long standing history that started with the BRS1 and today culminates in the latest and most advanced system BRS4.0. The principle task remains the same: providing a reliable monitoring system for critical transport infrastructure. The BRS4.0 constantly monitors a conveyor installation for possible damage. Detecting any kind of damage, the system will immediately send a signal to the

driving motors of the conveyor preventing any further damage to your critical infrastructure. Over the years the Becker BRS system has often been imitated but never replicated. Being able to safely detect damage without false alarms in any environment and under any environmental condition, is the way to drive uptime and productivity in operations.



ENDIS4.0

Strength Relies on Energy

In mining, as in any other industry, a reliable power supply is essential for the use of modern technology. With ENDIS4.0, Becker Mining Systems provides a modular energy distribution system for underground environments – intelligent, robust, and built for demanding conditions.

The World's Most Controllable Power Underground

ENDIS4.0 features advanced plug-and-play switchgear and compact substation designs for quick installation, easy module replacement, and seamless integration into Becker's automation and data networks. All switching functions can be remotely controlled, enabling real-time optimisation and higher efficiency.

Key components include the ENDIS Compact Station 4000 series, a modular medium voltage switchgear system with various contactor types and plug-in units.

The DTS – Disconnect & Transformation Sled – combines a DuraTrans transformer, an ENDIS Compact Station, and the Arc Guard protection





Rope Attachments

Maximum Safety. Proven Performance. Anywhere in the World.

Becker Mining Systems provides highly engineered rope attachments for every type of winder and shaft rope application. Designed for maximum safety and reliability, these systems are trusted around the globe – including on the world's largest and most demanding winders. Each attachment is precision-manufactured, rigorously tested, and fully traceable, ensuring consistent performance under extreme load and environmental conditions.

With over 80 years of experience and an unbroken safety record, Becker delivers tailored solutions that meet the exact specifications of each mine site. From initial design to destructive testing and final certification, every step reflects a commitment to quality, compliance, and operational continuity. This makes Becker's rope attachments a critical component for safe and efficient shaft operations worldwide.

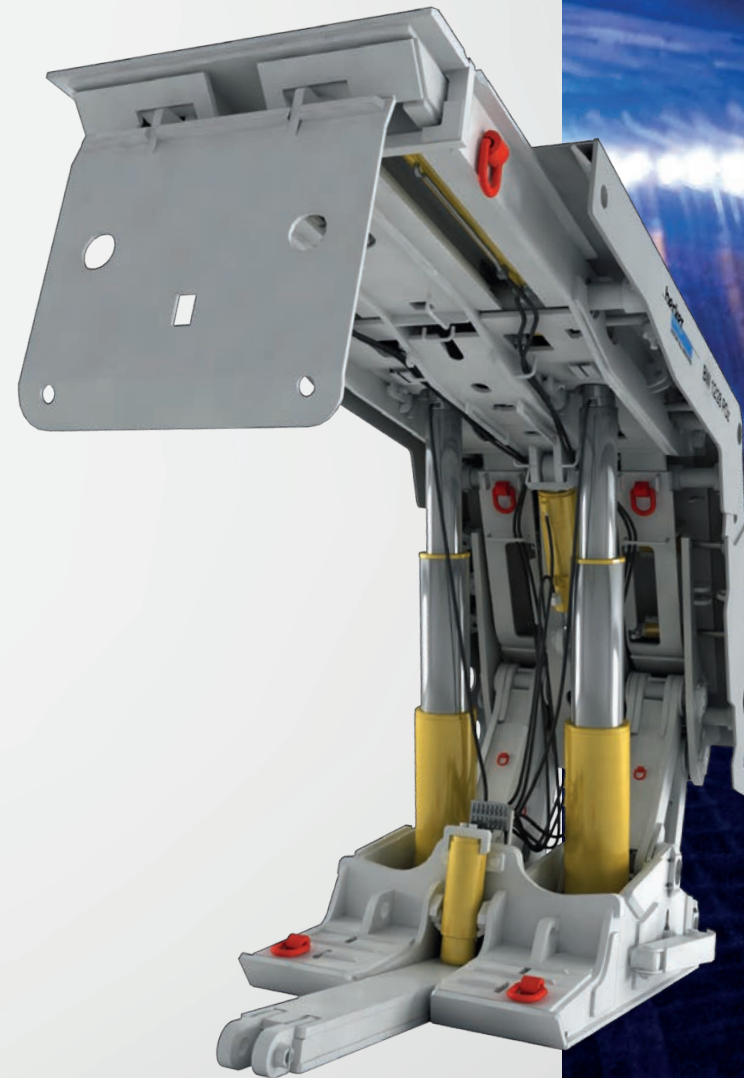


MineSupport

Solutions for Every Mine

Becker Mining Systems is a trusted manufacturer of equipment for both longwall and shortwall coal mining systems. Utilizing the latest technical and technological advancements, we specialize in the design and production of Powered Roof Support, Armoured Face Conveyors, Beam Stage Loaders and Crushers. We cater for the entire project: from design to project management, factory acceptance, delivery and commissioning.

Furthermore, Becker is a trusted manufacturer of complete electrical equipment (ENDIS) for longwall and shortwall systems. All our devices and machinery comply with the legal standards of the destination country and meet stringent health and safety requirements.



Becker Mining Systems AG

Landwehrplatz 6-7
66111 Saarbrücken
Germany

info@becker-mining.com
www.becker-mining.com

Tel +49 6897 857 - 0
Fax +49 6897 857 - 188

Becker Mining Europe GmbH

Neumühler Weg 32
66130 Saarbrücken
Germany

info@becker-mining.com
www.becker-mining.com

Tel +49 6897 857 - 179
Fax +49 6897 857 - 188

Technical data are limit values. If the product is integrated into systems or operated in combination with other devices, its permissible operating values can deviate from these limit values. Subject to technical modifications without prior notice.
Becker Mining is a trademark of Becker Mining Systems AG.
© 2023 Becker Mining Systems AG or one of its affiliates.

Member of:

