



**CKX**

**Large diameter solids Pump**

# CKX Pump

CKX pumps use large diameter impellers for wear reducing low-speed operation. Solids of all kinds and sizes (up to 228mm solids) are readily pumped through extra-wide flow passages. With a superior hydraulic design, this pump offers powersaving efficiency levels and excellent suction characteristics. In most abrasive solids-handeling services, the CKX can provide the optimum combination of solids handling ability, low power cost, and minimum pump wear.

High chrome iron 28% (650 BHN) is used for more severely abrasive applications and extends the CKX pump's resistance to abrasion , mild corrosion and impact loads.

The extra loads created when pumping slurries of high specific gravity are easily handled by the CKX bearing assembly.

Designed for a minimum B-10 life of 25,000 hours, pump bearing fully enclosed and sealed. Grease or oil lubrication may be specified on 4 inch through 8 inch pumps.

The rugged, abrasion-resistant design of the CKX keeps maintenance and downtime at a minimum. Routine maintenance is made easy by such features as split bearing housings, an external adjustment screw for impleller-to-sucking disc liner clearance, a readily accessible stuffing box, and simple overall pump construction.



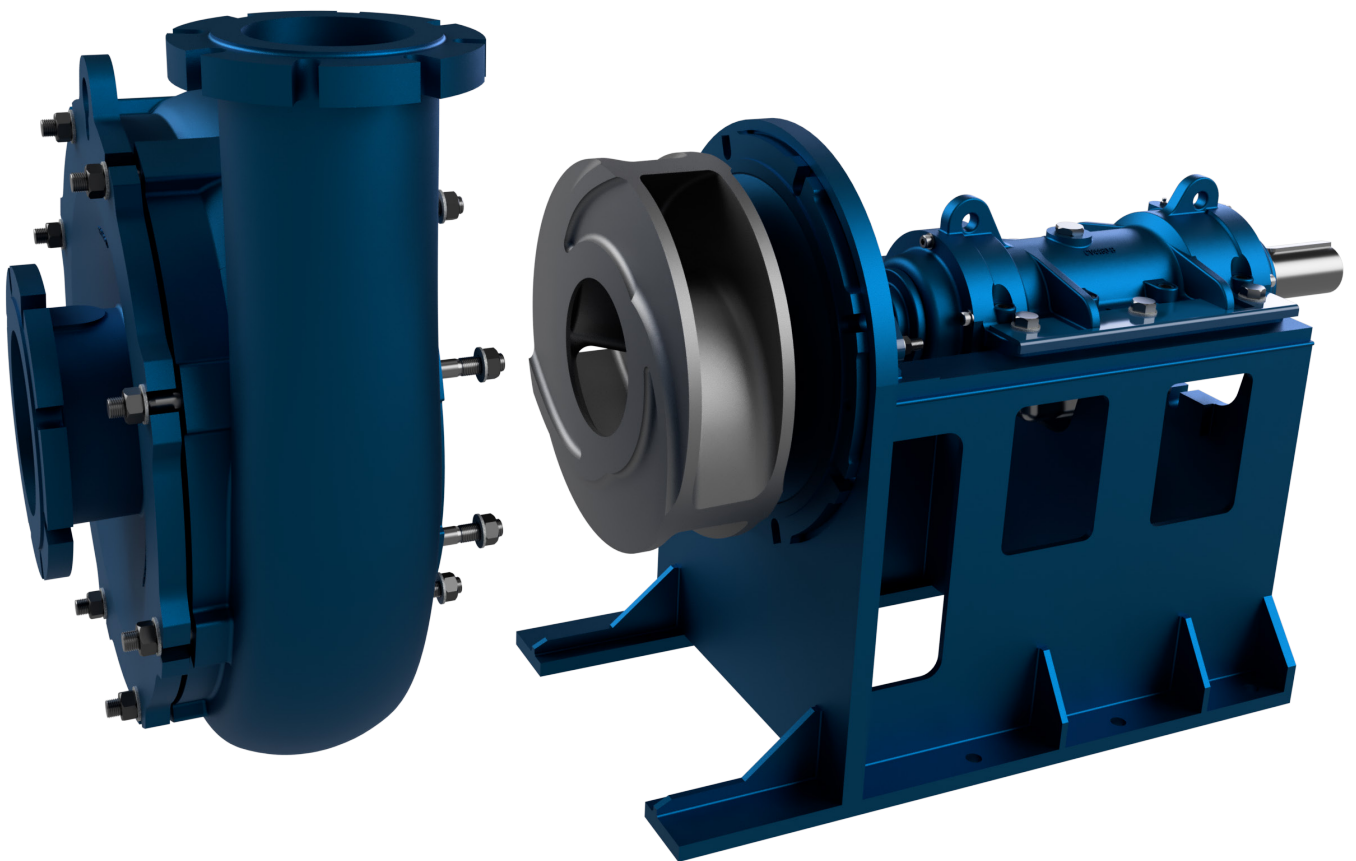
DISCHARGE (A)	SUCTION (B)	IMPELLER (C)
101 mm	127 mm	381 mm
152 mm	203 mm	495 mm
203 mm	254 mm	610 mm



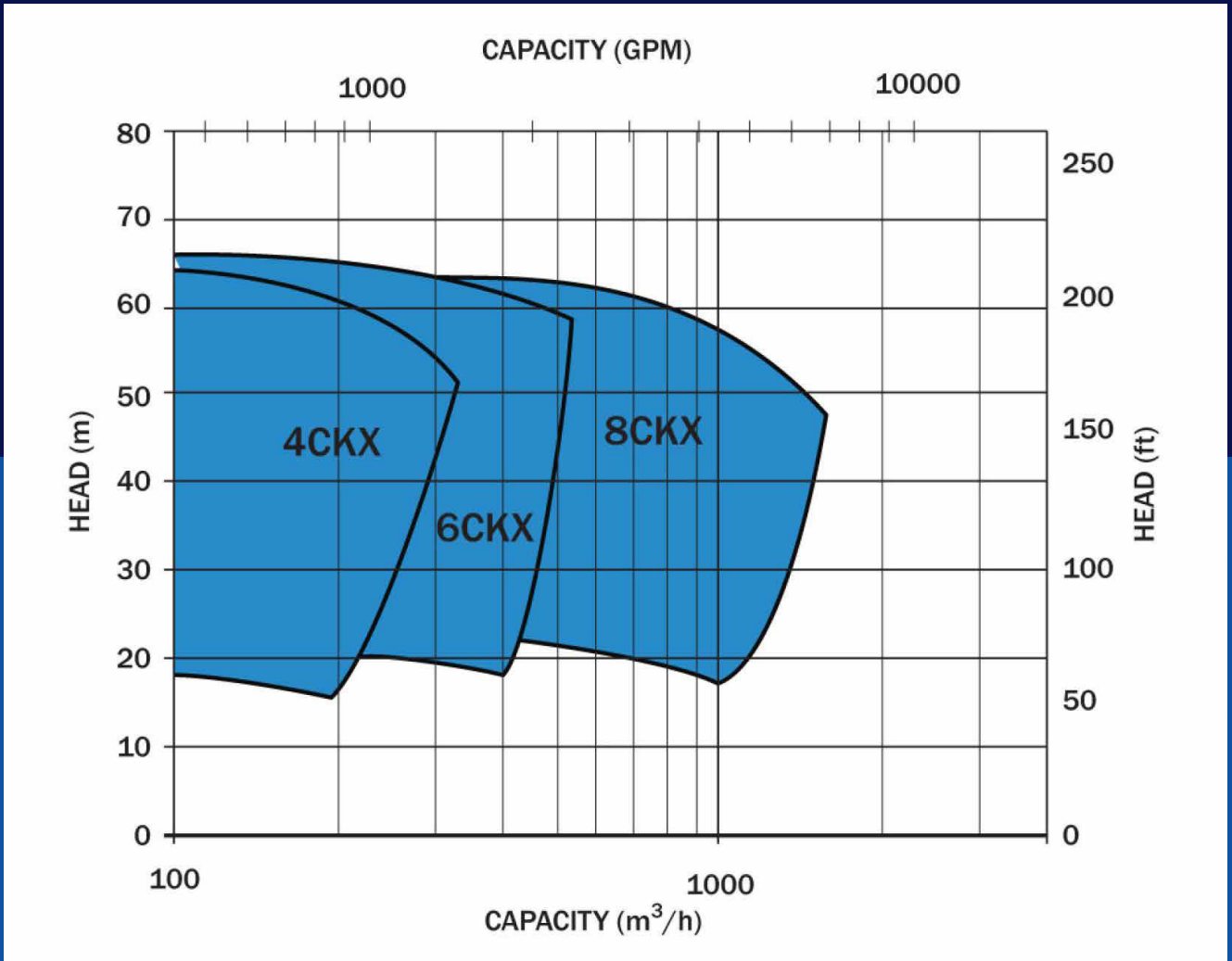
# CKX Pump

## Features

- Suitable for extremely heavy duties.
- Extra thick wear parts for longer life.
- Replaceable wear liner for longer life.
- External impeller adjustment to maintain original efficiency.
- CR28% (650 BHN) material as standard for increased wear life. Other materials include: SS316, CD4MCU.
- Extra thick 3-vane impeller with large flow passages to enhance solids handling capability.
- Pump-Out vanes to reduce pressure on stuffing box.
- SG'S of up to 1.8 can be handled.
- High pump efficiencies, requires lower kW motors.
- Available in horizontal with interchangeable parts.



# CKX Pump range



Becker Mining South Africa (Pty) Ltd

4 Clarke Street North  
Alrode, Johannesburg  
South Africa

Tel +27 11 617 6300

[info@za.becker-mining.com](mailto:info@za.becker-mining.com)  
[www.becker-mining.com](http://www.becker-mining.com)